An architectural rendering of a modern building complex. The building features a mix of white, grey, and red facades with large windows. It is situated behind a calm pond that reflects the building and the sky. Several people are walking on a path in front of the building. In the foreground, three young women are sitting on a rocky shore, looking at their smartphones. The sky is a clear, deep blue.

DO YOU SPACE

Rooftop renovation Berlin Charlottenburg

The landscape architect client wishes to free his rooftop apartment from the clumsy relics inherited from its previous renovation. All bulky items should find a place, the stuff disappear in wooden meanders along the walls. A river where gargantuan pines float flows now through a forest of poles struck by light flashes. The navigable space continuum is modulated by large sliding doors, acting as sluices.

He cultivates his interior, as an art gallery, for concert venues, as a movie theater. He cooks the harvests of the two roof gardens. He likes to receive but also to confine in a lush privacy. He can sink into a leafy space of switchable uses pruned with sunny clearings. Also the bright living room hides an alpine hut with a crackling fire after the turn off spotlights.

A landscape of memories in the making.



client
site manager
structural engineer
area
completion

private
Stefan Biller
Bauateliers Berlin
150 m²
2013

Cuisine berlinoise



Once a typical apartment renovated in the 90s, fragmented and banal. Tasteless. The KüBox replaces the culinary delight at the heart of well-being. Recipe:

- Season the space by opening new associations.
- Give the daily basic ingredients more room.
- Butter beforehand to sprinkle cement tiles.
- Stuff the woody envelope with a chocolate heart. Surprise effect guaranteed.
- Grate the zest of bricks for a rustic touch.
- Put aside an additional portion for a happy guest or event.
- Dessert, spoon the bathroom with a delicate sauce.

DoYouSpace transformed the concepts of starred chefs Aude Soulain and ZweiDrei into accessible reality. Remarkable is the extraordinary creativity of the cooks that with their saws and trowels were able to give shape to ideas.



client
planning
site management
KüBox wood joiner
photos
area
completion

private, Berlin
Aude Soulain, Paris, ZweiDrei, Berlin
DoYouSpace, Berlin
Florian Glässel
Aya Schamoni
75 m²
2014



Shape and facade design

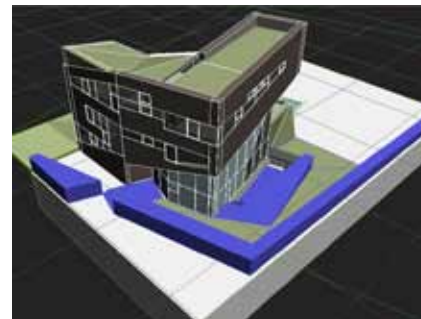
Villa M, Berlin
with HSH Architektur, Berlin

Initially commissioned for the conceptual development of the design, we explored geometric and facade variations for this ambitious villa project for an old-timer collectionneur. Passive standards had to be reached though the program was extremely luxurious.

We started with a parasiting of the traditional Berlin villa typology through sky oriented light shafts. This provided a high grade of intimacy while flooding the interior space with natural light.

The north oriented garden suggested us an original shape in order to keep the garden sunny. Experimentations continued in 3D for the facade composition and materiality until complete fulfillment of all involved parties wishes.

Budget restrictions ended these plastic researches for a more conventional facade system.



client
site area
living area
garage for 8 old-timers
pool
total
completion

private
1 600 m²
450 m²
200 m²
50 m²
650 m²
2013



© HSH Architektur / Stefan Müller / Moskau GmbH

Refurbishment of a GDR heritage

Cafe Moskau, Berlin
with HSH Architektur, Berlin

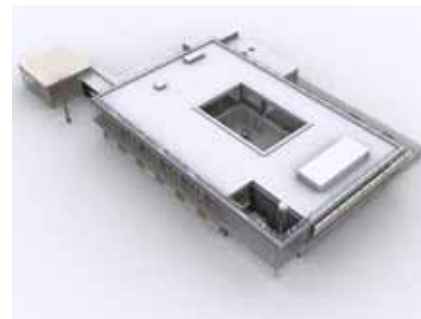
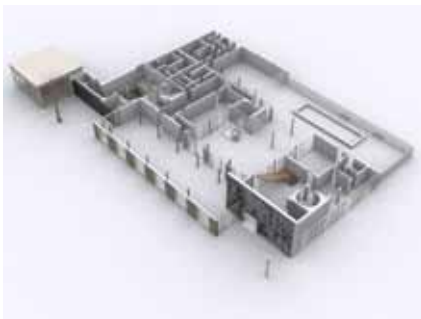
The Cafe Moskau is a prestigious east-Berlin building by Josef Kaiser from 1964. It became an avant-garde techno club in the 1990s. HSH Architektur was commissioned to refurbish this cultural heritage.

The key concept consisted in rebuilding the altered 1960s design while optimizing thermal and functional properties to actual standards.

I was first asked to keep the 3D model up to date, I then contributed to the elaboration of the design of the new entrance space. It had to squeeze in an 1980s extension composed of fragmented storage spaces.

3D variations helped in understanding existing geometric paradoxes and optimize space flow. Material combinations could be tested and validated through simulations. The client contracted a complete 3D model to speed up contact with potential event organizers.

I occasionally assisted the 2D and 3D detail design. I also designed a parametric waved ceiling for the club space in the basement, which has not been built.



client
surface
original architect
opening
completion

Nicolas Berggruen Holdings GmbH
4 000 m²
Josef Kaiser
1964
2009



© Arup

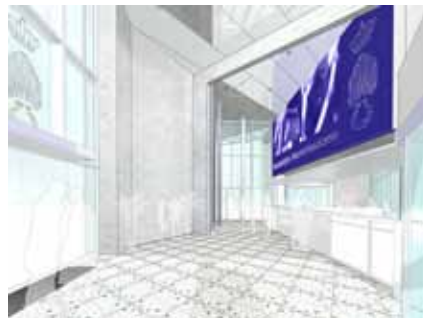
Security center

Schiphol airport, Netherlands
with Zvi Hecker Architects, Berlin

In 2001, the Schiphol Airport contracted Zvi Hecker to design a vast security center for the royal military police including offices, dormitories, a police school and facilities. Despite a complex program the architect achieved an exceptional design in continuity with his style.

I assisted the process with CAD drawings in plan and elevation based on hand-drawn sketches by Zvi Hecker. I also collaborated to the continuous update of a 1:250 physical model, to the entire facade drawings for building permit and to 3D simulations of key spaces.

Assisting the project enriched my design perception but also taught me how to organize work in a vast and complex building.



© Zvi Hecker Architekten

client	Koninklijke Marechaussee
site	77 000 m ²
gross floor area	33 000 m ²
program	police school, dorms, offices, sport and logistic
completion	2013

Art space conversion

Oberhausen main station
with KitEV



The station has a tower with clocks visible from far in the city. It is used by KitEV for workshops and interventions. The top windows display installations at night. One unused platform is showing artistic interventions, known as Museumsbahnsteig.

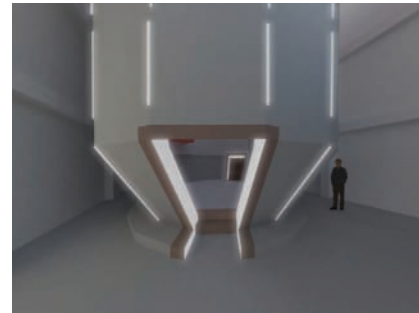
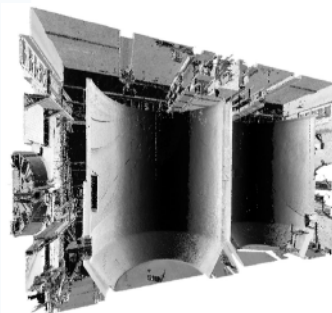
A singular feature of the tower are two concrete water tanks on the last floor. The concept of KitEV is to make this unusual space available for art performances. It has already happened, like for a sound installation. Accessibility is a challenge. The space is technical with narrow paths and steep ladders. First a precise documentation of the built substance has been needed. The space got 3D scanned.

A simplified 3D model has been built from the point cloud data. Various accessibility scenarios have been developed. Visitors should also be able to get on the roof of the tower. Currently enjoying the tanks requires acrobatic skills. It is a lot about how to make them accessible for any visitors without altering them too much.

The space is really inspiring. There are lots of ideas, but not all are feasible. Security, budget, aesthetics, a lot of parameters have to be taken into account. The collective power of KitEV is developing the most striking concepts. The art space will benefit from best options in cooperation with intervening artists.

client
gross floor area
water tank diameter
water tank height
program
completion

city of Oberhausen
200 m²
7,50 m
10,50 m
space for artistic installations
2017



O-berhausen

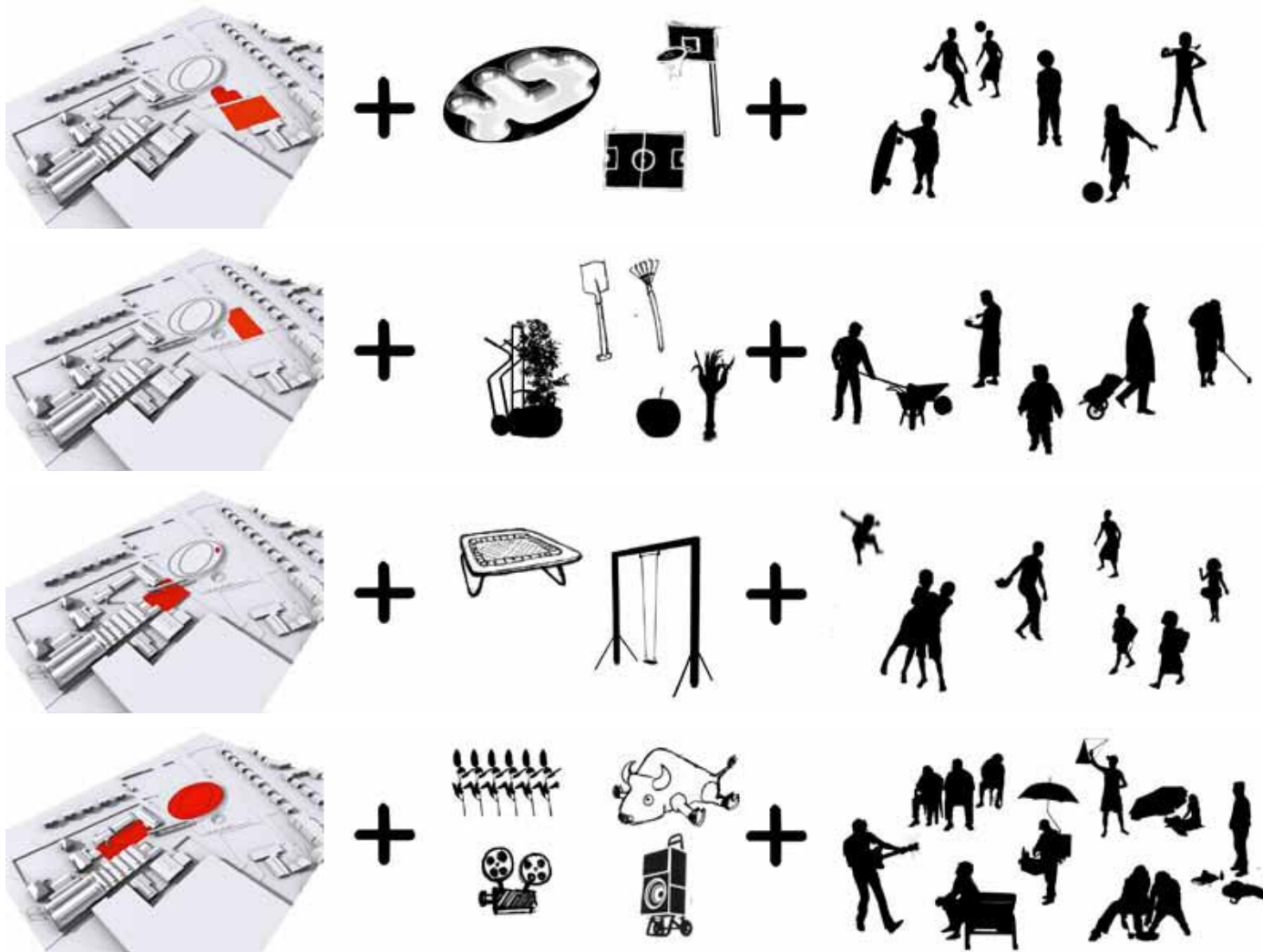
Building competition, 1st prize
with Ateliers Stark

The *Rheinisches Industrie Museum* wanted to landscape and connect its surrounding spaces for Essen-Ruhr European capital of culture 2010. Access from the Oberhausen train station had to be made easier, the entrance more attractive, the courtyard more welcoming, the Altenberg park (described as a wasteland by inhabitants) nicer. A solution had to be found for a problematic open sculpture representing the city's districts, but due to vandalism prevention military fenced.

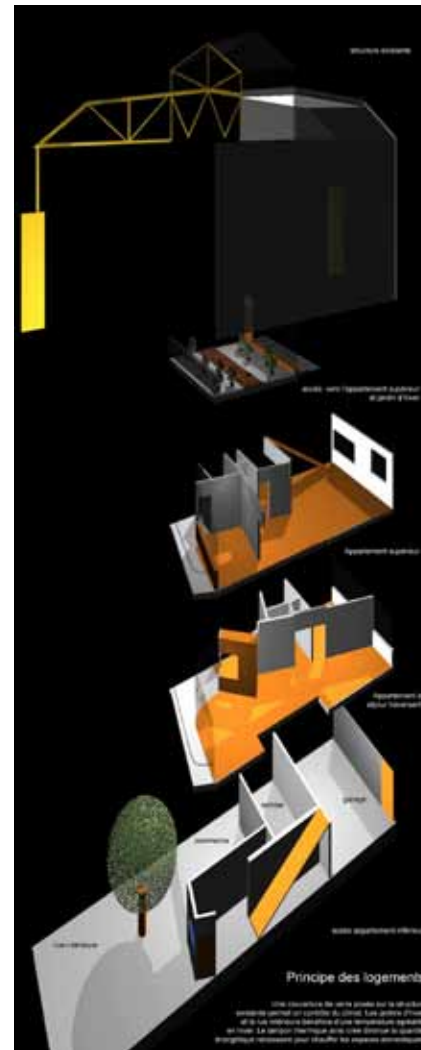
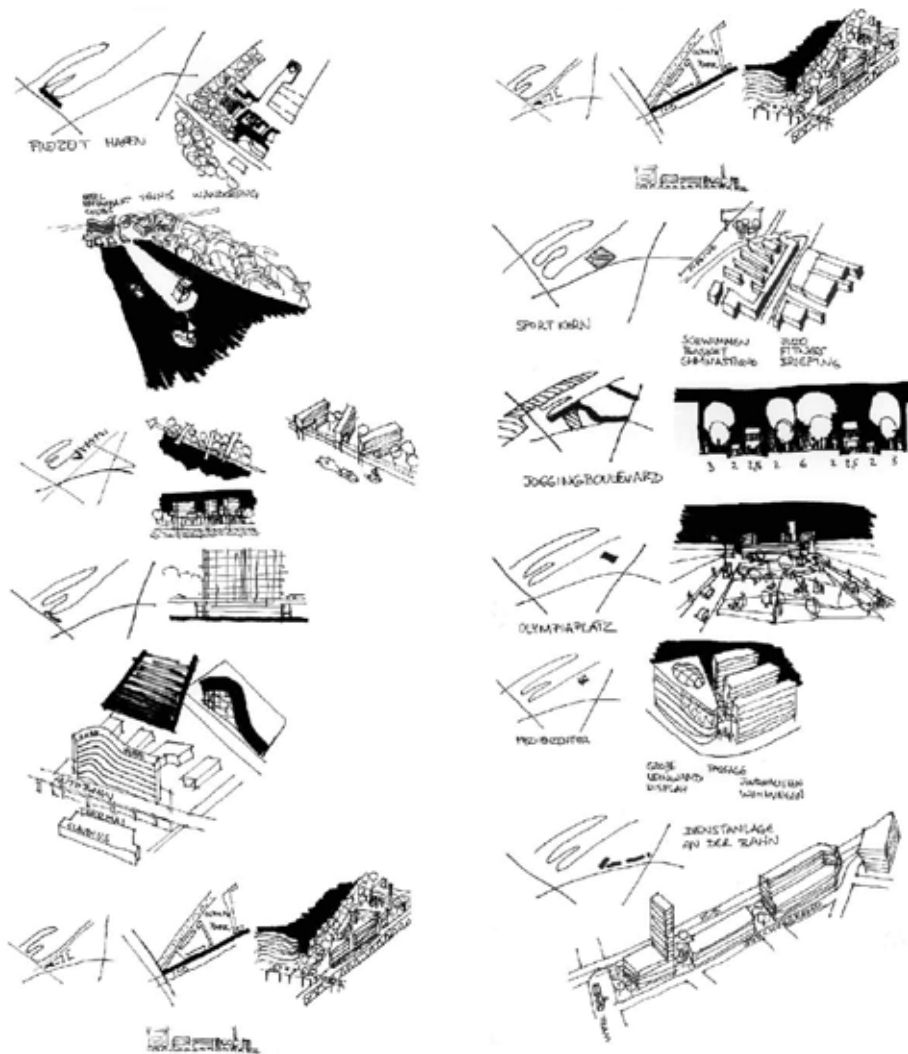
Projects goals were global reactivation through clearer orientation, a greater limit porosity and an expansion of cultural activities. The problematic sculpture was torn down and supplanted by trampolines displaying city districts.

I took part to the project conception and coordination of the graphical design.

The project convinced for its efficiency with limited means (apart from the extravagant tubular youth hostel). The sculpture removal was unanimously acclaimed even if it was state funded. The city had unfortunately to lower its debts, green spaces suffered the first budget cuts.



client	Rheinisches Industrie Museum
program	park and museum open space landscape design
completion	dued 2010, canceled



An olympic village for Cologne

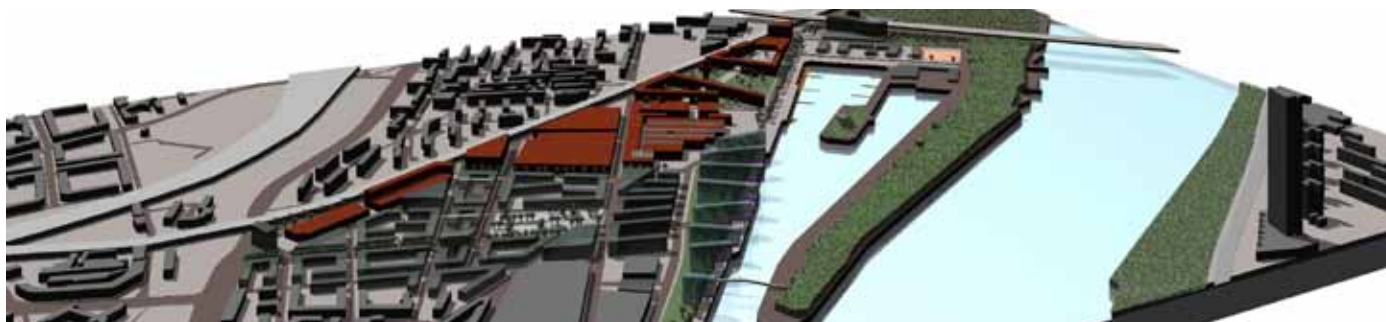
Student urbanism competition | 1st Prize
with Sarah Busch

What to do with a big industrial area, but well connected and near to the center, with views on the river and a big park ? Sport.

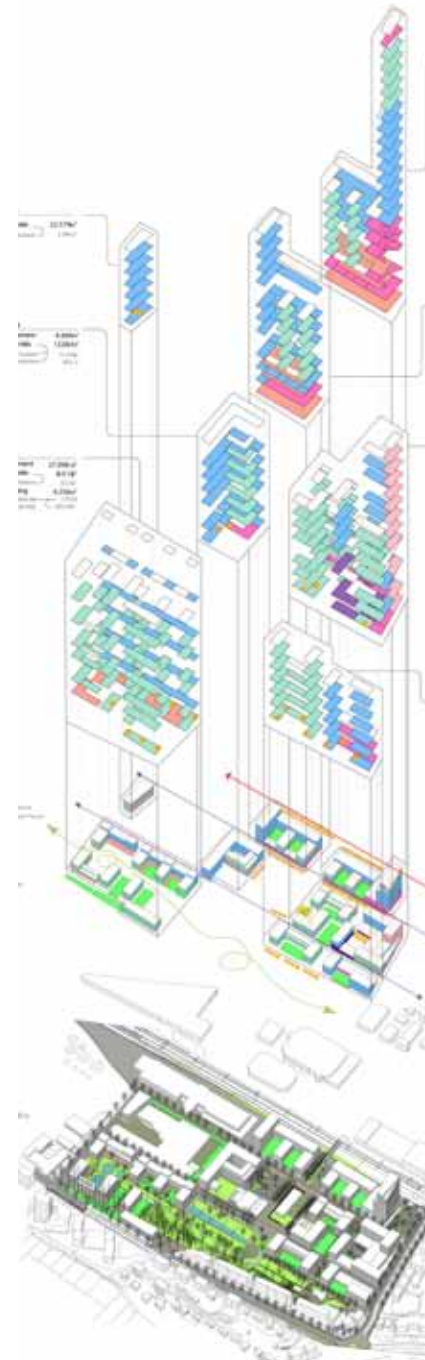
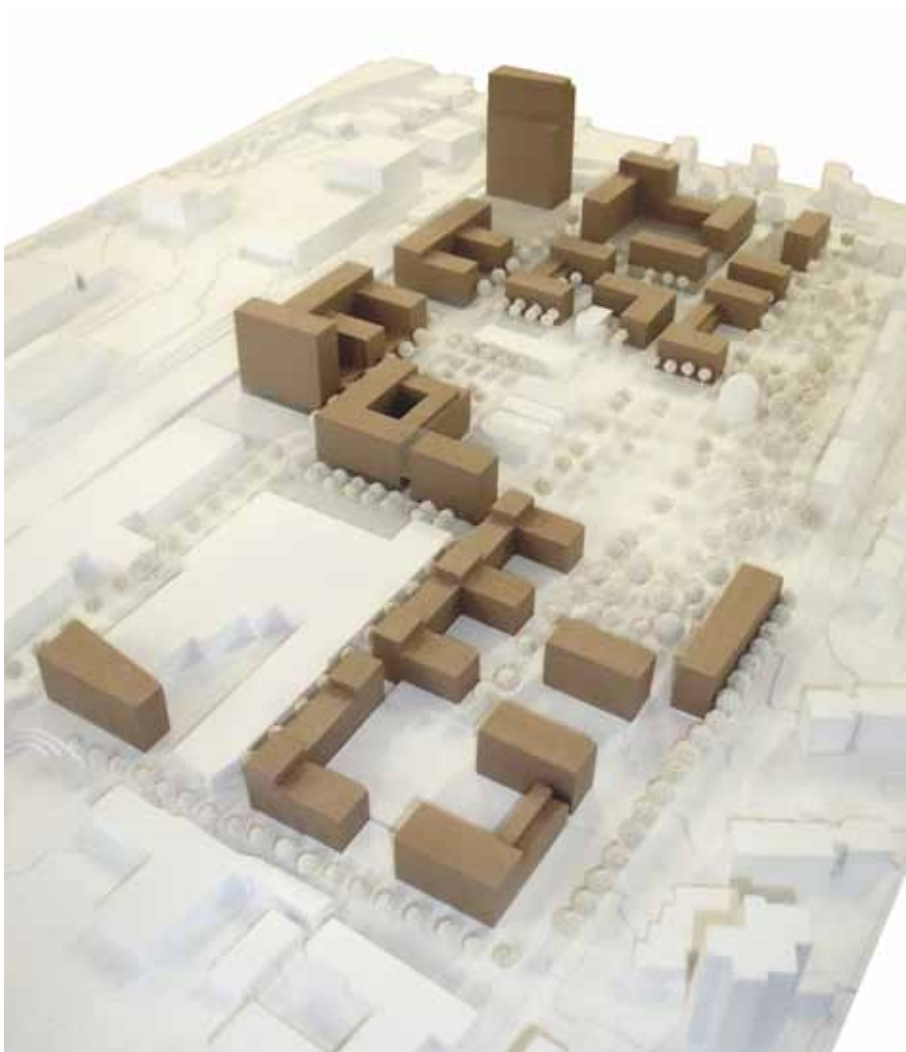
High density housing on the waterfront so everybody can have a dream view. Business and hostels near the tracks and the main road to catch the noise. Planted strips leading to the water to jog till dawn. A big square making the civic center, surrounded by low-density social housing. A park displaying some industrial ruins. Sailing possibilities with the haven.

And a sport core with flexible controlled climate housing and all existing training facilities. It could have been a great site for the Köln-Düsseldorf olympic champions.

With this project we won the LEG (real estate development) student competition 2002.



client	Landes Entwicklung Gesellschaft
site	10 ha
high-end housing	50 000 m ²
social housing	50 000 m ²
offices	100 000 m ²
sport	25 000 m ²
public space	250 000 m ²



Reconversion, Malley Centre, Lausanne

Urban and landscape competition – 4th prize
with HL Landschaft

This former gas production plant benefits nowadays from an attractive situation between the towns of Renens, Prilly and the city of Lausanne. A regional train stop and a subway stop connect the area.

Several studies and the masterplan guided our conception. We decided to concentrate high-density office buildings along noise generating spaces in order to shield the generous squares, parks, gardens and housing lots. 3 garages are designed in the peripheral office blocks, no cars have to cross the site.

The jury enjoyed the efficiency of the scheme but considered the project too heavy and over-designed. They chose a more flexible solution, where different densities coexist all over the site, even if ignoring some aspects of the previous studies and recommendations.

client	ville de Renens
site	160 000 m ²
housing	70 000 m ²
offices	70 000 m ²
school	3 000 m ²
garages for 800 cars	16 000 m ²
2 squares	6 000 m ²
theater	existing
winner	In Situ, Lyon

Sustainable housing, Geneva

Building competition – 2nd phase
with FarOuest

LA JONCTION

Two rivers – one clearly famous, the Rhône; the other, almost secret, the Arve – conflate their waters here. Mythology is not a dictionary vanity; it is a soul habit. Two rivers joining are, in a way, two eternal beings merging.

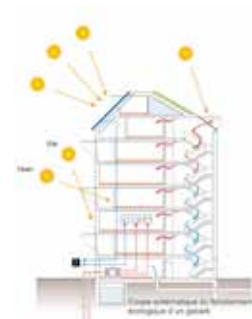
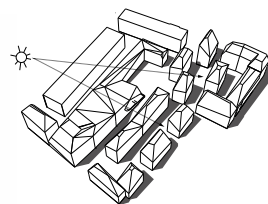
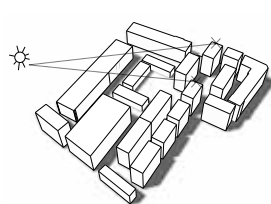
J.L. Borges, Atlas, 1984 (free translation).

We tried to combine the programmatic high density with spatial generosity. Only half of the underground is built with storage facilities. This way rainwaters can seep naturally and open spaces can host honourable trees.

Existing buildings are maintained in order to show the site's history. They host activities that could make a continuity with the past cultural use by ARTAMIS, a self-administrated alternative collective, evicted for the project.

The rooftop of the monumental garage becomes a leisure slope crowned with an associative concert hall.

The building shapes are cut by sunlight and by environmental considerations like solar cells and planted roofs.



client	Ville de Genève
site	27 000 m ²
housing	27 000 m ²
services	5 000 m ²
school	3 000 m ²
garage for 350 cars	7 000 m ²
museums storage space	10 000 m ²
total	52 000 m ²
winner	Dreier Frenzel



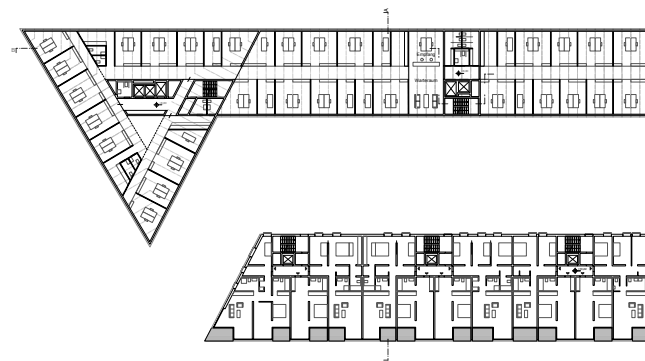
Campus Tower offices and housing

Architectural competition – 3rd prize for offices
for TRU Architekten

The urban configuration had already been defined and could not be altered. TRU Architekten changes the massive scale of the defined volume through alternating facade layers. The public ground floors are as minimal as possible and offer maximum transparency.

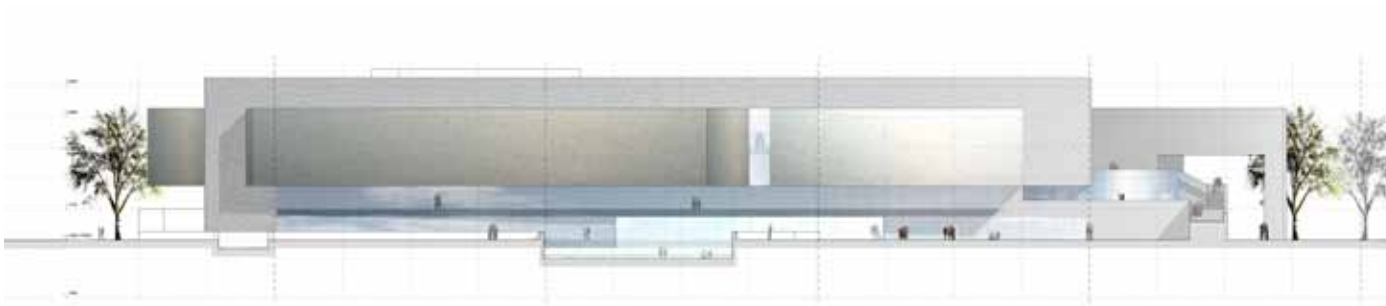
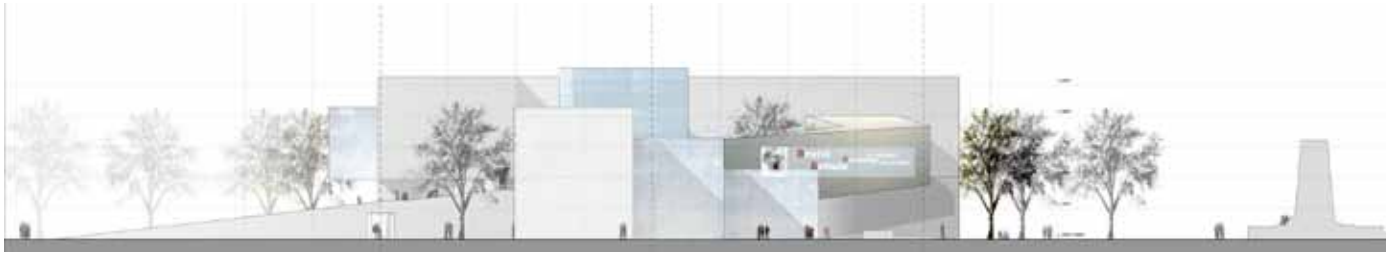
The triangular floor plan reminds Mies van der Rohe emblematic tower project for the Friedrichstrasse from 1922. The glass curtain wall is a free interpretation of Mies concepts without directly citing them.

The waterfront housing development had to be one third social housing. The standard apartments defined by the client are playfully altered by movable sun-shading elements.



client
location
site
offices
housing
winner offices
winner housing

Garbe Immobilien
Hamburg Baakenhafen
8 000 m²
13 000 m²
8 000 m²
Delugan Meissl
sop architekten



© Zvi Hecker Architekten



Museum of History of the Polish Jews

International competition, 2nd Prize
with Zvi Hecker Architects, Berlin

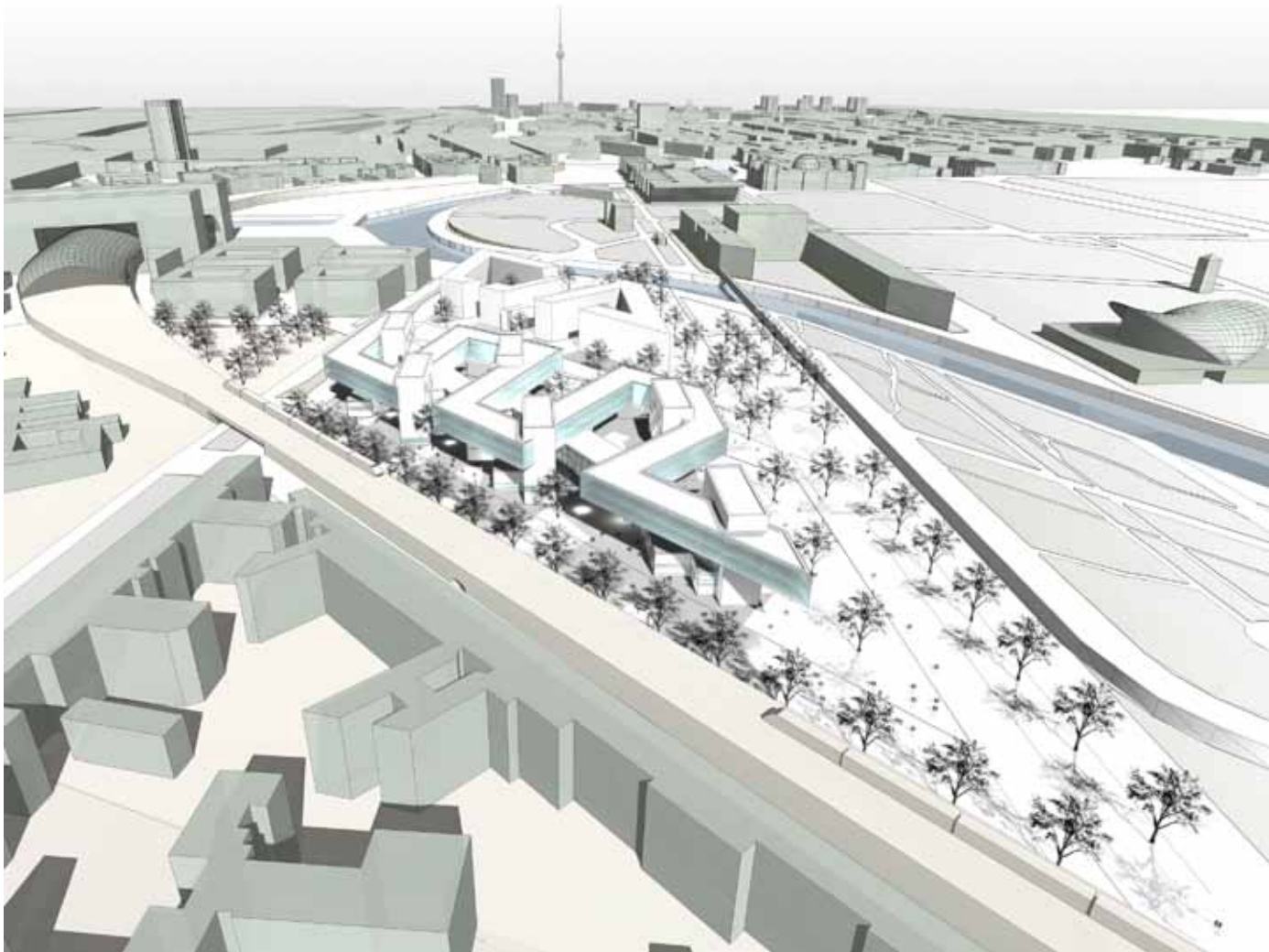
In the heart of the former Jewish ghetto of Warsaw, nowadays a park, a monolithic stone reminds the past. The city wants to build a museum to complete the memorial.

The plan of the design opens like a fan between the orthogonal geometry of the surrounding communist housing blocs and a vanished diagonal ghetto street.

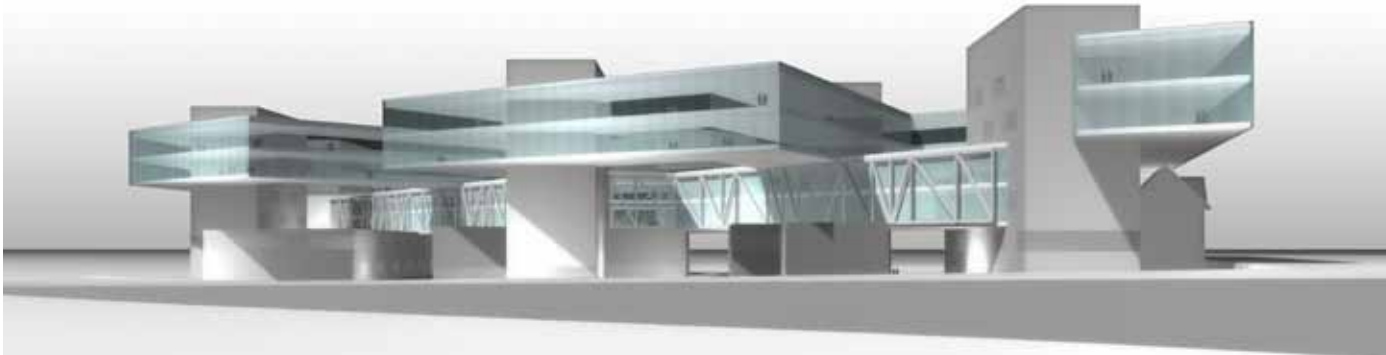
I designed the elevations and coordinated the graphical design.

The awarded project smartly proposes a gap like a canyon in a simple shaped box.

client	The Museum of the History of Polish Jews
gross floor area	13 000 m ²
winner	Lahdelma & Mahlamaki Architects, Helsinki



© Zvi Hecker Architekten



Federal Ministry Building

International competition, selected for phase 2
with Zvi Hecker Architects, Berlin

The competition site is a waste-land between the Berlin main train station and the governmental district. It will host the federal ministry. The design approach deals dynamically with the train noise. It even becomes kinetic. I assisted the graphical conception of the first phase of the competition. The only remaining is a classified historical building, the restaurant Paris-Moskau. Another expectation was to design a modular and extendable building.

The awarded project fits to the actual trend in Berlin : vertical openings strictly aligned on a mineral facade, giving a strong monumentality to the designs, reminding the German 1930s.

client	Bundesamt für Bauwesen und Raumordnung
site	31 000 m ²
gross floor area (module 1)	29 000 m ²
budget	175 M€
winner	Thomas Müller, Ivan Reimann Architekten



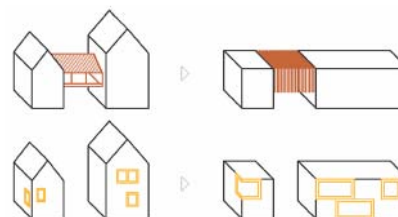
L'école des Vignes - St Blaise, CH

Building competition - not selected
with Marc Latapie, Bauateliers and HL Landschaft

The medial village next to Neuchatel has a strong identity that inspired the school design. The typical swiss window frames are bolder here through the 18th century style of the town. Wooden connecting space elements are also a constant. Furthermore, a magnificent wine field lies west of the site, allowing the view to embrace the lake. The sloped terrain of the school became terraced with the same stones.

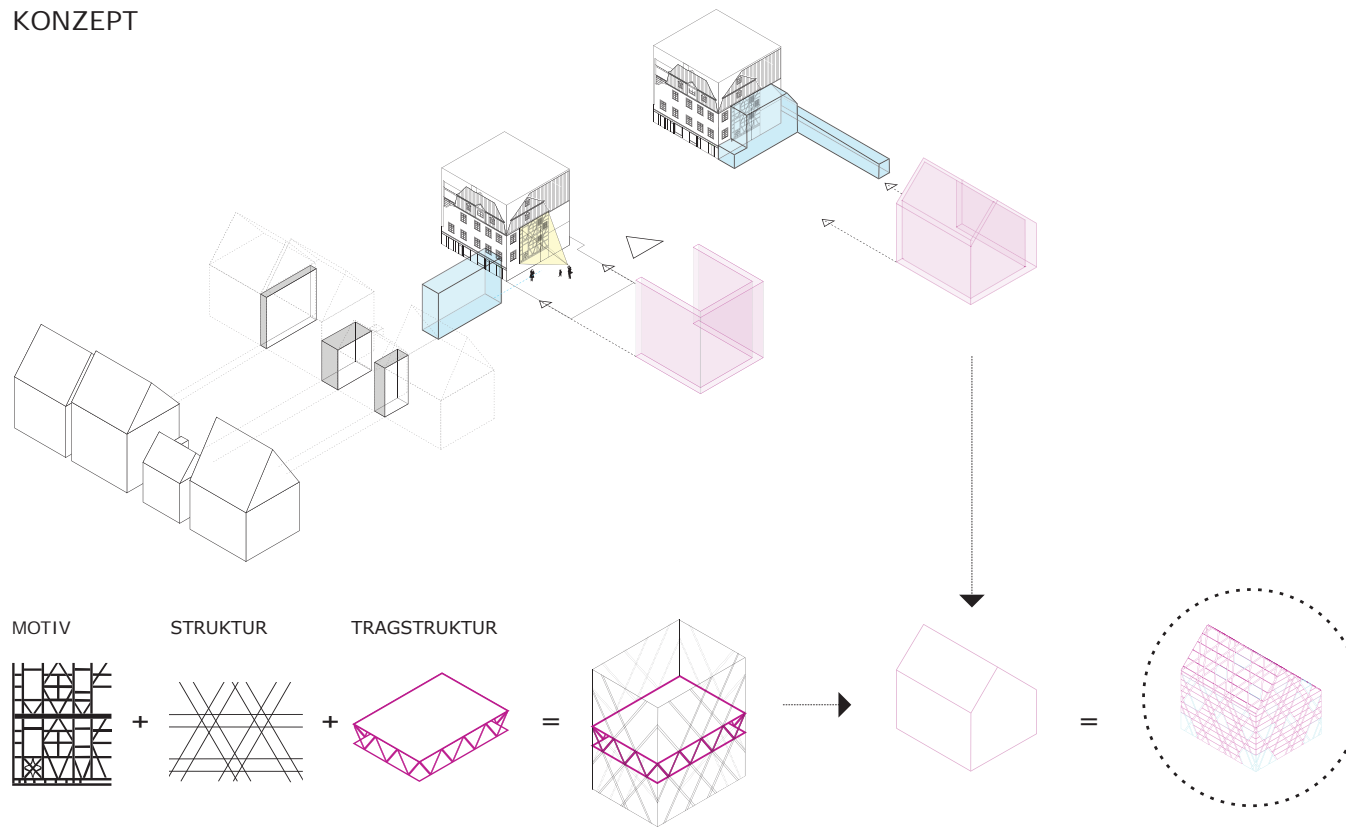
We hybridized these traditional characteristics with the latest recommendations for school design, like connectable rooms, L shaped classes and as few different buildings as possible. The design got too unusual, a standardized pavilions solution won.

The identity of the place was not altered through the maintaining of the actual buildings, a common house and a brutalist era school, almost unchanged.

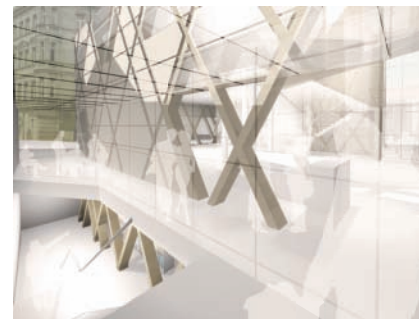


client	Ville de St-Blaise
site	12000 m ²
actual secondary school renovation	4000 m ²
extension	1800 m ²
primary school	1800 m ²
child care	600 m ²
playgrounds	3200 m ²
budget	23M CHF
winner	Patrick Minder Architecte

KONZEPT



© HSH Architektur



Extension of the jewish museum Fürth

Building competition
with HSH Architektur, Berlin

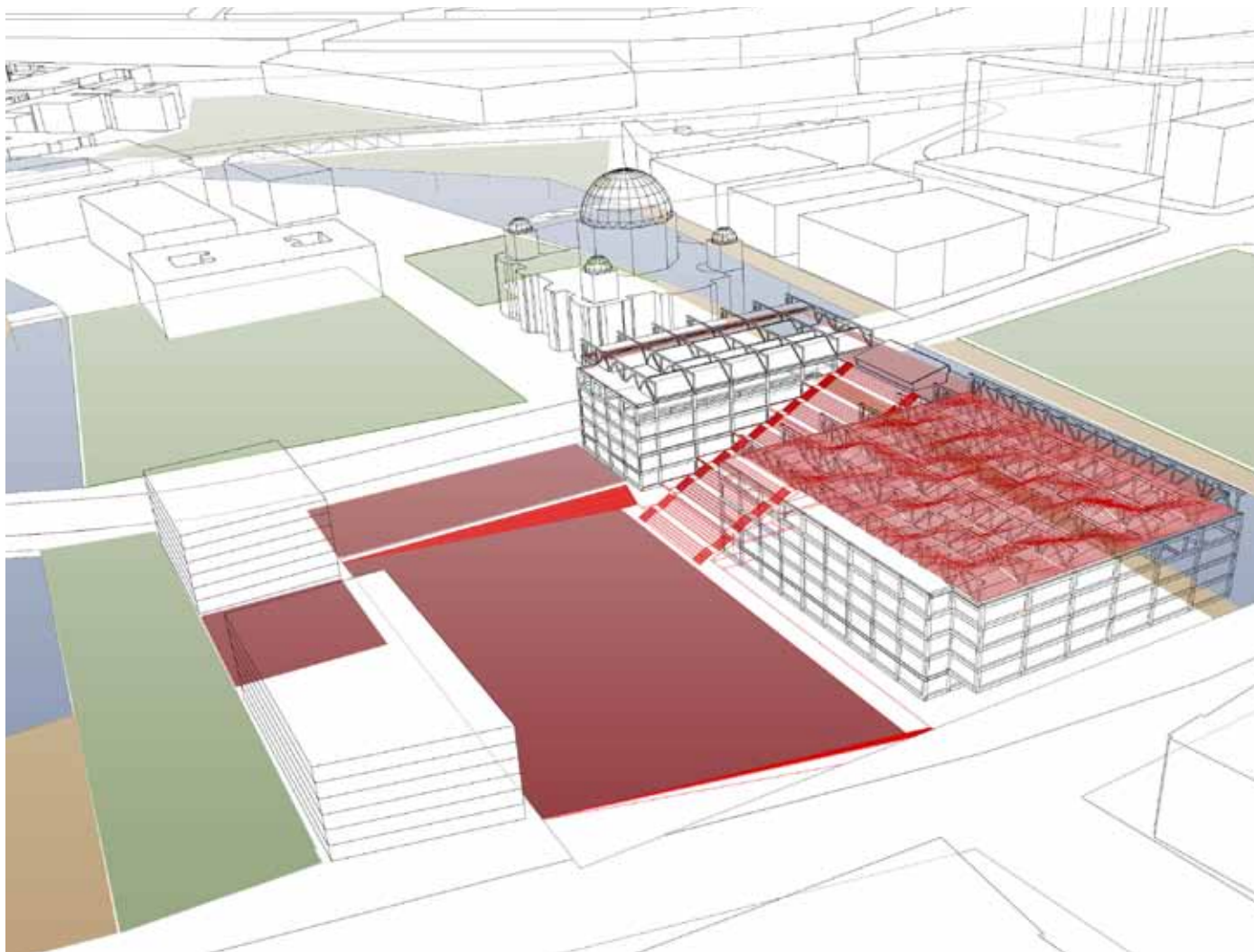
Fürth, 5 km from Nuremberg, is one of the rare German cities spared by WWII bombings. We were greatly inspired by the medieval urban context.

We tried to give a new structural meaning to the half-timbered topic : the first floor is a cantilever structure freeing the ground floor from structural elements. Facade motives draw david stars and clovers, symbol of the city. Circulation space are dimensioned according to the local typical gaps between houses.

Instructions suggested using the basement as exhibition space. We made the hazardous bet of putting it in the basement in order to create a window display on the street level, what moved the library underground. The conference space benefits of the generous roof space.

It was considered too bold by the jury, as the geometric play with the David stars.

client	Regionalkonzept GmbH
usable area	850 m ²
program	exhibition, conference, library, administration
winner	Architekturbüro Gatz, Kuntz + Manz Architekten



The Palast der Republik utopia

Diploma, summa cum laude, ENSAPLV
under supervision of Yong-Hak Shin

Die DDR hat es nie gegeben was written on the foundation ruins of the destroyed *Palast der Republik*, literally *GDR never existed*. Its demolition extended from 2006 to 2009. Despite the popular success of its temporary use, the idyll of the past Prussian Castle convinced the politicians.

The public debate revealed the utopia of a responsible approach toward history in opposition with the easily used *tabula rasa*. This obsolete structure could have become the place of contemporaneity, even an avant-garde space anticipating emerging needs.

The project is a low-budget refurbishment proposal in accordance with the spontaneous and sparkling local culture. A place of possibilities where contemporaneity could have unveiled without compromises.

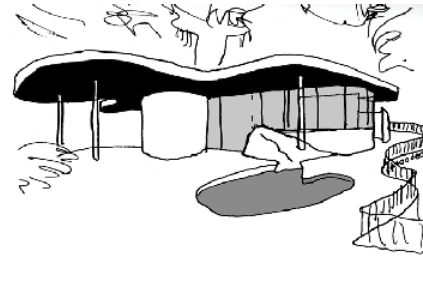
The program tries to anticipate future needs and that for intentionally undefined. The recycled structure could have been able to adapt to multiple uses, what is emphasized by the level independence through the central stairs. A refurbishment limited to strictly necessary interventions would have made the space accessible to more informal institutions, more dynamic because more spontaneous.



nature	TPFE Graduation 2006, summa cum laude
site	40 000 m ²
existing structure	40 000 m ²
cultural facilities	30 000 m ²
public space	20 000 m ²
destruction	2006
completion of the baroque castle	2019



"Thai people, when they see the Kantana, say it is just brick walls, there is already plenty of it, in temples. They think it is too simple. Nothing special about it. Then they enjoy the atmosphere, the shade, but nothing fancy."
Boonserm Premthada, Bangkok, March 2014



"Architecture doesn't matter. What counts is the will to change the world, everyday."
Oscar Niemeyer, Rio de Janeiro, March 2009



"Is sustainability truly an alternative to the idea of progress as destruction, or is it just another mythology that has distorted urban design to validate the capitalist production of built environments."
Tanu Sankalia, IASTE conference, Portland, October 2012

